



World
Leading
Manufacturer

ActiveCryo and Cryo V2 Beyond Recovery



**Cryotherapy chambers based
on liquid nitrogen**

www.vacuactivus.com

What is Cryo Therapy?



Cryotherapy is a specific low temperature therapy used in sport rehabilitation for fast recovery after injuries as well as weight loss and body shape enchantment. Cryotherapy comes from the cryo meaning cold, and therapy meaning cure. When the right cryotherapy equipment is used, the science of subjecting the entire human body to extreme cold temperatures to stimulate the healing of its circulatory, nervous, and energy systems is a powerful remedial technology. According to scientific and medical research, the optimum efficiency of whole body cryo-

therapy procedures, is achieved once the body is exposed to temperatures up to -120 - -170°C (-184 - 280F) for a 1-3 minutes, reducing the skin's surface temperature. These non-invasive, short, and extremely cold bursts of air projected to the human body evoke physiological reactions that prompt healing and recovery in numerous fields, including beautification treatments, sports injuries rehabilitation, and medical functions. Additionally, the controlled cold environment has been proven to trigger an analgesic reaction in the neural mind leading to positive mood states and thus acting as an antidepressant and sleep disorders repairer. A cryotherapy treatment became a very popular in a practice growing in use worldwide. Cryotherapy is used in an effort to relieve muscle pain, sprains and swelling after soft tissue damage or surgery. It can be a range of treatments from the application of ice packs or immersion in ice baths (generally known as cold therapy), to the use of cold chambers as called as cryotherapy chamber **Whole body cryotherapy** is becoming worldwide well documented as being used for the daily management of pain, inflammation, energy, relief and stress related conditions.

Cryotherapy offers healing benefits of cold therapy to community. **Whole Body Cryotherapy** is famous burn calories and relieve pain therapy method via exposure to extreme temperatures. Extreme cold temperature stimulates skin sensors, activating a central nervous system response using a release of endorphins, the body's natural pain inhibitors and mood elevators. Also, this **cryotherapy** method enhanced blood and lymphatic circulation activity decreases inflammation by clearing toxins and metabolic waste with a supply of oxygen and nutrient enriched blood to stimulate cellular regeneration around the body. Regarding a many articles a cryotherapy treatments have been adopted by many famous professional athletes and teams for muscle and injury recovery.



Key Benefits Of Cryo Therapy



Cryotherapy is essentially the process of using cold temperatures for their health benefits. This form of therapy has been used in different ways since the 1700s to decrease pain and muscle spasms, improve recovery, slow cell aging and improve health. Athletes have been soaking in cold tubs and ice baths for decades, but recent innovation now allows for whole body cryotherapy (WBC) in a specialized chamber using liquid nitrogen and is the form most often referred to in modern references to Cryotherapy. This type of cold therapy was invented in the 1970s in Japan, and has only come to the US and

other countries in the last decade. It has gained widespread popularity with athletes and those with certain chronic illnesses (as well as housewives who don't like ice baths).

Major application for cryotherapy:

1. Pain relief and muscle healing

Cryotherapy can help with muscle pain, as well as some joint and muscle disorders, such as arthritis. It may also promote faster healing of athletic injuries. Doctors have long recommended using ice packs on injured and painful muscles. Doing so may increase blood circulation after the ice pack is removed, promoting healing and pain relief.



2. Weight Loss

Cryotherapy alone will not cause weight loss, but it could support the process. In theory, being cold forces the body to work harder to stay warm.

Few minutes of cold can increase metabolism all day. People no longer feel cold because their metabolism has adjusted and increased in response to the cold temperature. Because cryotherapy helps with muscle pain, it could make it easier to get back to a fitness routine following an injury. This potential weight loss benefit is limited to people who cannot or will not exercise because of pain.

3. Reduced inflammation

Inflammation is one way the immune system fights infection. Sometimes the immune system becomes overly reactive. The result is chronic inflammation, which is linked to health problems, such as cancer, diabetes, depression, dementia, and arthritis. As such, reducing inflammation could also improve overall health and reduce the risk of numerous chronic ailments.

4. Preventing dementia

If cryotherapy reduces inflammation, it could also reduce the risk of developing dementia. A 2012 paper puts forward the possibility of cryotherapy being able to reduce the inflammation and oxidative stress associated with dementia, mild cognitive impairment, and other age-related forms of cognitive decline.

5. Preventing and treating cancer

Because whole body cryotherapy might reduce inflammation, it is possible it could also lower the risk of developing cancer. Medical Cryotherapy is a well-established treatment for certain forms of cancer. A doctor might use cryotherapy to freeze off cancer cells on the skin or cervix and occasionally to remove other cancers.



6. Reducing anxiety and depression

Research findings that cryotherapy may reduce inflammation suggest that it could treat mental health conditions linked to inflammation. Some preliminary research on cryotherapy and mental health also supports this claim.

7. Improving symptoms of eczema

The chronic inflammatory skin condition known as eczema can cause intensely itchy patches of dry skin. A small 2008 study of people with eczema had participants stop using eczema medications. They then tried cryotherapy. Many of them saw improvements in their eczema symptoms, though some complained of frostbite on small areas of the skin.

8. Treating Migraine

Headache targeted cryotherapy that focuses on the neck may help prevent migraine headaches. In a 2013 study, researchers applied cryotherapy to the necks of people who had migraines. The treatment reduced their pain.

How does it work?



Cryogenics has been used for hundreds of years. The most common form is the use of ice baths to reduce muscle swelling, soreness and speed up recovery. At extreme low temperatures, thermo receptors on the skin are stimulated due to the intense energy in the stream. Strong signals are sent to the brain, which are faster than pain receptors. As the skin is cooled to the necessary temperatures, the trauma cycle is activated.

Cryo stimulation triggers vasoconstriction followed by rapid vasodilation providing the patient with a natural analgesic effect alongside ongoing micro-circulations being driven around the treatment area.

NATURAL HEALING – Cryo stimulation involves the activation of natural body defenses making it totally safe. The short time exposure to extreme low temperatures does not affect the core temperature of the body. The treatments are environmentally friendly.



PAIN RELIEF – Cryo stimulation has a natural analgesic effect on the body, therefore the feeling of pain is significantly reduced post treatment. Lower levels of pain encourage natural movement. Increasing the strength and flexibility of joints and bones is key to increase metabolic processes, as inflammation stays in the joint.

TIME SAVING – Unlike other 'cooling' treatments such as using of ice packs where the patient is resting for a long period of time, each treatment generally lasts up to 3 minutes. Cryo stimu-

lation reduces injury recovery timeframes so that athletes can resume rehabilitation earlier and lower drug intake.

PLEASURE – Bathing in the streams of cold air feels much more comfortable than usual methods involving cold water because at super low temperatures the stream contains almost zero moisture. As a bonus, the cold triggers productions of endorphins called "feel-good hormones", which induce feelings of euphoria. This encourages return visits.



What is ActiveCryo and CryoV2 Therapy Chamber and what is the difference with other chambers?

You could find a lot of offers regarding cryotherapy chambers. What is ActiveCryo and CryoV2 difference with other chambers? In most cases cryosaunas available from competitors were developed on old-style platform which was introduced over 25 years before and still used in cryotherapy chambers of competitors, just a few small updates. Therefore clients could find a lot of same looking cryosaunas with old-style cubic design. A few competitors tried to incorporate in their machines new technologies, such as thermal imaging camera, wi-fi, indirect spaying, but their machines became overpriced. VACUACTIVUS as a solid world manufacturer created modern style cryosauna and newest developed functionality for reasonable price, that a such affordable cryosauna models should crash monopoly of old-style looking cryochambers. After long time researches and hard work of best designers and technicians, we introduced ActiveCryo in 2017 as Basic version. Just during a year ActiveCryo became a bestseller on US and European markets, therefore we updated ActiveCryo in 2018 and added Light, Luxury and Luxury with thermal imaging versions. During a few last years over 200 units of ActiveCryo from VACUACTIVUS were successfully installed and continuously working in over a 50 world countries. CryoV2 is model launched in 2019 as a newest model available on marker which incorporated all latest achievements in cryotherapy industry. Both models CryoV2 and ActiveCryo have a modern and futuristic design with ergonomic exterior and capable interior. This model stay beyond any competitor's models due to incorporated new technologies.

Major benefits of ActiveCryo and CryoV2 cryotherapy chambers:

- Platinum jets indirect spaying technology which help to reduce nitrogen spending to 3-5L per session and avoid any injuries due over cooling. This innovative technology developed by VACUACTIVUS helps to reach even nitrogen distribution inside chamber.



- *Newest color touch screens, developed and updated software*
- *Easy installation and operation*
- *No special maintenance required, just refill nitrogen*
- *High quality components made in USA and Europe and long life working time*
- *Availability of customize equipment*
- *State-of-art design and extended functionality*
- *Best customer and technical support all around the world*

What is difference between models and versions?

Functions	ActiveCryo Light	ActiveCryo Basic	ActiveCryo Luxury	ActiveCryo Luxury with thermal imaging	CryoV2	CryoV2 Oxygen
						
Platinum Jets indirect Technology	-	+	+	+	+	+
Automatic lift up to 150kg	-	+	+	+	+	+
Extension podium for high point lifting	Manual pads	-	+	+	Incorporated in lift system	Incorporated in lift system
Aircraft style door opening	+	+	+	+	-	-
Regular door opening	-	-	-	-	+	+
Software	Welton A1	Welton A1	Welton A2	Welton A2	Android A3	Android A3
Main display	7"/400Hz	7"/400Hz	7"/800Hz	7"/800Hz	10.1"/800Hz	10.1"/800Hz
Second display	-	7"	7"	13.3"	7"	13.3"
Thermal imaging camera + video	-	-	-	+	-	+
Nitrogen hose and connectors included	-	-	+	+	+	+
Interior color	Grey	Grey	Variety of colors	Variety of colors	Variety of colors	Variety of colors
Exterior color	Grey	White	Variety of colors	Variety of colors	Variety of colors	Variety of colors
Transportation wheels	-	-	+	+	+	+
Emergency stop button	+	+	+	+	+	+

Push door for emergency stop and exit	+	+	+	+	+	+
Counter of session and life timer	-	-	+	+	+	+
Wi-Fi connection	-	-	-	+	+	+
3 automatic and 1 manual programs	+	+	+	+	+	+
Adjust default lift position	-	+	+	+	+	+
Min temperature	-120C/-184F	-120C/-184F	-120C/-184F	-120C/-184F	-120C/-184F	-120C/-184F
Max temperature	-170C/280F	-170C/280F	-170C/280F	-170C/280F	-170C/280F	-170C/280F
LED backlights	+	+	+	+	+	+
Drying system	-	+	+	+	+	+
Fresh oxygen breathing mask	-	-	-	-	-	+

HOW MANY TREATMENTS ARE REQUIRED?

The number of treatments varies depending of what the patient is trying to achieve and how the body responds to the treatment. Using Cryo stimulation for muscle recovery is routine method of support and may be carried out in cycles of a 10-20 sessions to gain the full long lasting benefits of the treatment. Injuries vary in severity, so the number of treatments is difficult to quantify. The physiotherapist and the patient will assess when they feel that the injury has been fully rehabilitated.



The number of sessions can vary due to severity of injuries and conditions being unique to each case. A patient may feel fully recovered after 3 or 4 sessions, however it is more beneficial that the patient does a cycle of a 10-20 sessions to gain the full benefit of the treatment. This will help to prevent recurring injury and to strengthen the treatment area further. If patient needs to return to full fitness as soon as possible, sessions can be carried out twice a day. However there should be a 4 - 6 hour break between treatments. The reason Cryo stimulation treatments are

recommended daily or every other day is because Cryo stimulation causes the treatment area to experience an increased rate of blood flow lasting for several hours. By having treatments close together the patient experiences a consistently higher rate of blood flow and a natural analgesic effect for a longer period of time. This speeds up the healing and rehabilitation process and makes the treatment even more effective than spacing out treatments.

IS POST TREATMENT EXERCISE NECESSARY?



When Cryo stimulation is used in combination with physiotherapy or Cryoshaping treatment, the patient should exercise post treatment. This is due to the fact that improving the strength and flexibility of joints and bones is key to recovery. Post treatment exercise entails a series of exercises or mobilization movements as advised by a physiotherapist, which focus on strengthening the joints and muscles of the treatment area. Sometimes patients can feel great after the first few sessions and then a few days later they will suddenly feel pain or aching. This is a good sign that Cryo stimulation is working effectively because the joints and muscles have been exercised and moved more freely whilst recovering. After a 6 to 7 days these symptoms will have completely gone. After Cryoshaping treatments it is essential that exercise protocols are carried out (the patient can bring activewear to the treatment). The reason the patient works out

afterwards is to amplify the effects of the treatment. Active Cryo stimulation releases a lot of anti-inflammatory proteins in to the treatment area and by exercising the blood flow is increased, which distributes them better around the body. By increasing the heart rate, blood flow increases around the body and not just in the treatment area. Therefore, metabolic processes are working at a higher rate and the micro-circulations being driven around the body create an energy deficit. Post treatment exercise can consist of going for a 20 minute run or a series of exercises that increase the patient's heart rate.



WHO ARE VACUACTIVUS?

VACUACTIVUS is a world leading manufacturer and seller of a whole body cryosaunas, portable cryotherapy machines, recovery and rehabilitation equipment and innovative fitness equipment. VACUACTIVUS is on world market over 15 years and our team helped to equip a many successful projects around the world including cryotherapy facilities, medical offices, hospitals, beauty salons, luxury spas, recovery centers, rehabilitation clinics, gyms, and hotels. VACUACTIVUS is an one of the largest factories in the world in cryotherapy recovery and rehabilitation industry which manufacturing a huge range of innovative equipment. VACUACTIVUS is a innovative equipment and solution for cryogenic recovery applications. We have created the science of using low temperature gases to deliver healing, preserving and longevity benefits to the human body and its surrounding habitat. VACUACTIVUS focuses on delivering cryotherapy recovery solutions and other customized installations allowing you to thrive in healthcare, sports, and beauty industry. VACUACTIVUS is a manufacturing company whose doctors and professors develop and produce daily use devices for hospitals, clinics, private



medicine, SPA and aesthetic centers all over the world. In terms of quality and popularity, VACUACTIVUS are the leading manufacturer of cryotherapy chambers and localized cryo equipment supplying devices to physiotherapists, aesthetic clinics, elite sports teams, doctors and national health services.

HOW COLD DOES IT GET?

Active Cryo Therapy Chamber can reach temperatures of up to -184°C or -280°F . This temperature could provide an optimal treatment temperature for maximum Cryo stimulation. Therefore, the operator will be treating patients at this temperature and lower so that the patient's skin is cooled down sufficiently to the required temperature.



DO YOU FEEL COLD AFTERWARDS?

The patient will feel relaxed and warm as soon as the treatment ends because there is almost no moisture in the stream meaning that there is little tissue penetration. Also, by triggering Cryo stimulation the blood temperature in the treatment area rises and the increased blood flow provides a "rush" and big boost to the body's micro-circulations.

DOES IT HURT AT ALL?



No, not at all. It is not a penetrating cold as nitrogen vapor uses extreme cold temperatures containing also zero moisture. Rather than feeling the need to shiver, the patient will feel a dry cold that is comfortable on the skin. Cryo stimulation is a shock therapy, therefore the patient will experience a slight 'dull ache' due to the constriction of blood vessels, which fades immediately post treatment. A minute after the session is over the area will feel warm and there will be a visible red glow due to micro-circulations being driven around the treatment area. There is no tissue damage or down time.



CAN THE TREATMENT BE DANGEROUS?

The gas used to cool the skin is a nitrogen, and it is perfectly safe. It is the same nitrogen that makes up the air we breathe (78% of it). The aim is to Cryo stimulate the area so that the skin temperature is cooled to around 10-11C (50-55F) Whole cryotherapy can reduce unwanted pain and nerve irritation, it sometimes can leave the tissue affected with unusual sensations, such as numbness or tingling.

Cryotherapy may cause redness and irritation of the skin. The main contraindications for the treatment are:

- Cold intolerance
- Open wounds and ulcers
- Gangrenous lesions
- Hypothyroidism (avoid throat)
- Skin Cancer and other types of cancers
- Any other doctor's prescriptions

HOW LONG ARE THE TREATMENTS?



Physical therapy sessions range from 1 minute up to 3 minutes. Machine has 3 automatic programs (120-160C) and 1 manual (up to 170C) Cold sensitivity varies by age, muscle mass and fitness levels therefore trained Cryotherapists will be able to judge the necessary treatment times. Every patient is different in terms of desired outcomes, body type and injury severity so each treatment is tailored individually.

WHAT ARE THE ActiveCryo DIMENSIONS?

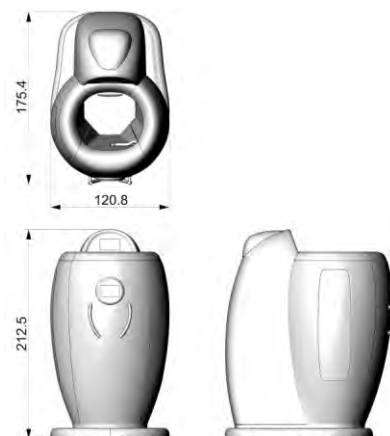


Dimensions indicated on images in centimeters

Dimensions in inches:

ActiveCryo and CryoV2 shipped as whole assembled piece with dimensions of packed pallet: LxWxH 200x130x220 cm / 79x51x86" inches Weight 400 kg/ 990LB

Available to order packing of disassembled on 2 pieces with pallets dimensions : 220 x 130 x 150 cm 225 kg and 220 x 90 x 105 cm 225 kg



WHAT IS ACTIVE CRYO NITROGEN USAGE?

Liquid nitrogen consumption a 1-1,5*L per minute or a 3-5*L per three minute session (*subject of change due increased temperature or humidity inside room, improper pressure in nitrogen tank and quality of nitrogen)

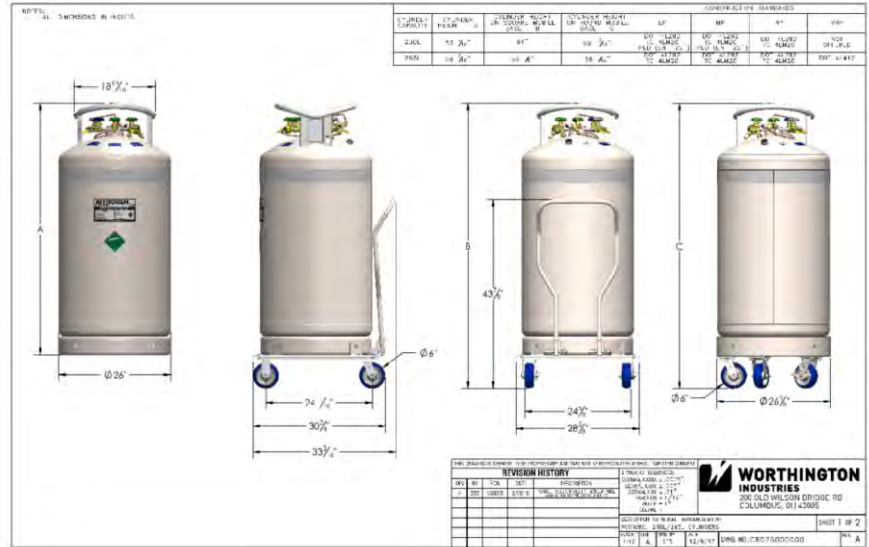
How connect ActiveCryo to nitrogen tank?

ActiveCryo connected to an outstanding nitrogen tank via nitrogen hose. Capacity from 160L to 5000L large cistern. Nitrogen hose and tank should be supplied from cryo-sauna manufacturer or rented via local nitrogen supplier



WHAT IS THE NITROGEN TANK SIZE and pressure?

Active Cryo cryosuna uses Liquid Nitrogen from nitrogen tank with capacity from 160L to 5000L. Most common solution for nitrogen tank is 230-240L. Tank specification attached.



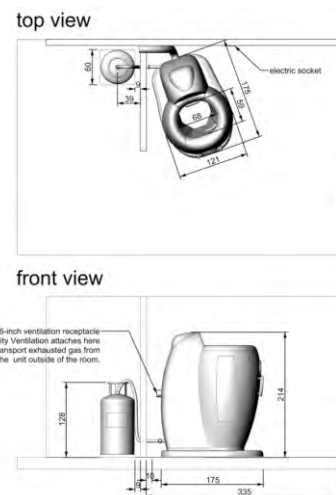
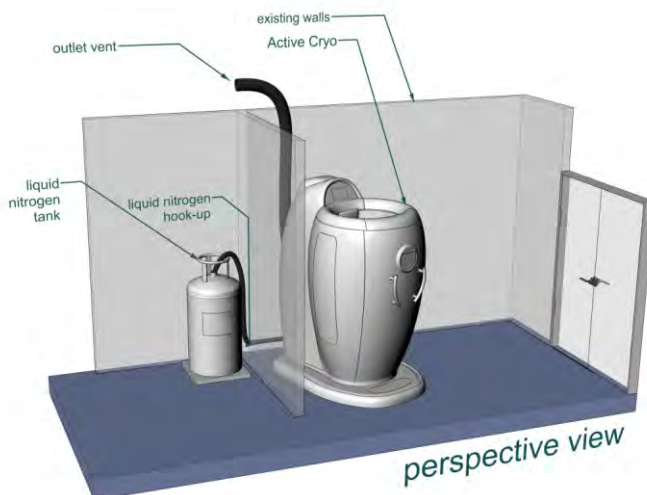
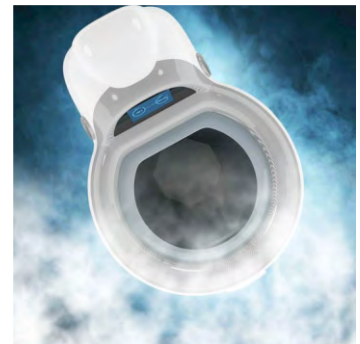
Working pressure inside tank needs to be 28psi (equivalent 1,8Bar or 0.15kPa), release valve 35psi (equivalent 2,2Bar or 0.22kPa). Machine should working with pressure range from 22 to 35 psi and similar release valve mounted on tank. Any reduced or increased pressure than recommended range should take effect on improper machine working or over spending of nitrogen,

Please contact VACUACTIVUS if you would like buy a proper nitrogen tank.

RATE OF EVAPORATION INSIDE THE DEWAR VESSEL

Liquid nitrogen dissipates at approximately 5-35 liters per week depending how properly working release valve. Actions take effect on increase evaporations:

- broken or improperly working release valve. Please contact nitrogen supplier in case of increased evaporation of nitrogen
- No shaking allowed
- Increased temperature inside room or over heat of nitrogen tank. Do not located nitrogen tank close to heated elements or AC.



HOW DO I GET LIQUID NITROGEN?

VACUACTIVUS has a partnership with many nitrogen suppliers all around the world. On client's request VACUACTIVUS will recommend few available local nitrogen suppliers which could provide nitrogen delivery service to your facility.

LIQUID NITROGEN PRICING

Liquid nitrogen costs around \$0.5-1,5 per liter depends of area and supplier. Local nitrogen supplier could apply delivery fee up to nitrogen cost. ActiveCryo should be connected to an outstanding nitrogen tank with most common capacity 230-240L. As such 230-240 should be enough for around a 50* sessions (average counted, see nitrogen requirements for reach optimal nitrogen spending). Established cryotherapy facilities tend to use two 230 liters dewar vessels or more per week, which is around \$165-300 per 230L tank excluding delivery fee. Nitrogen costs could be negotiated with a local nitrogen supplier by purchasing more refillings per months.



WHAT ARE THE ROOM REQUIREMENTS?

In order to meet most common Healthcare's safety regulations, owning an oxygen monitor and remote warning alarm system is a standard requirement for nitrogen supply. It is also important that the premises has ventilation that leads from the treatment room to an outside escape route unless the room is large enough to store the desired quantity of liquid nitrogen safely. As nitrogen is initially heavier than air when it falls to the ground, ventilation is required to be low down such as installing a vent at the bottom of the door in the treatment room. A most rooms in premises are suitable to locate the machine.



HOW MUCH ELECTRICITY DOES THE DEVICE USE?

Active Cryo is extremely economic in terms of electricity consumption, because a newest energy saving technologies used to create this machine. It could be plug-in to any regular outlet (120V America/Japan or 240V Europe/Asia/Australia depends of version).

HOW LONG IS THE WARRANTY?

A standard warranty terms is available on VACUACTIVUS manufacturer web page using this link <https://vacuactivus.com/warranty-for-exercise-equipment>. Standard warranty 1 year and available plans for extended warranty up to 3 years.



WHERE CAN I TRY MACHINE?

Please contact sales department VACUACTIVUS via e-mail: vacuactivus@gmail.com for request information about closest location or soonest trade show where available to try and review Active Cryo Therapy machine and other VACUACTIVUS products.

How much costs delivery and installation

Delivery and installation services are not included in price of equipment. Please contact sales department of VACUACTIVUS to check shipping and installation quotes. Available delivery and installation for all countries all around the world.



HOW MUCH PRICE FOR CRYOTHERAPY TREATMENT?

Cryo stimulation treatment prices have numerous variables depending on location, reputation and whether the treatment is carried out in combination with Physiotherapy for example. The 'Single Active Cryo session' should costs from USD50 to USD120 depends of area. Average price for set of 20 sessions should vary from USD700 to USD1200.

HOW MUCH PRICE FOR CRYOTHERAPY TREATMENT?



Cryo stimulation treatment prices have numerous variables depending on location, reputation and whether the treatment is carried out in combination with Physiotherapy for example. The 'Single Active Cryo session' should costs from USD50 to USD120 depends of area. Average price for set of 20 sessions should vary from USD700 to USD1200.

Expected gross sales per month

	New opened business	Established business
Number of clients per day (persons)	5	15
Number of clients per month (persons)	150	450
Average treatment price (USD/EUR)	65	50
Total monthly gross fee income (USD/EUR)	9750	22500

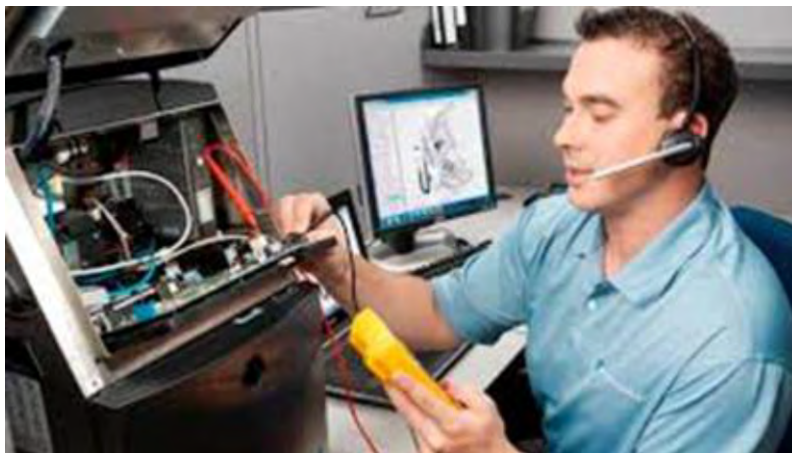
ActiveCryo and CryoV2 equipment price

Model	American market 110V	European market 220V
ActiveCryo Light	USD32,999	EUR25,999
ActiveCryo Basic	USD39,999	EUR29,999
ActiveCryo Luxury	USD42,999	EUR33,999
ActiveCryo Luxury with thermal imaging	USD45,999	EUR39,999
CryoV2	USD43,999	EUR34,999
CryoV2 oxygen	USD46,999	EUR39,999

CRYOSAUNA PAYBACK CALCULATION

Per month USD/EUR	New opened business	Established business
Gross sales	9750	22500
Liquid nitrogen expenses	800	2400
Other expenses including electricity and etc	100	400
Rent room 10m2/100sf	1000	2500
Salary expenses	1000	4000
Total expected expenses	2900	9300
Estimated profit	6850	13200
Budget for purchase cryosauna	35000	45000
Estimated return investment time	5 months	3,5 months

TECHNICAL AND INSTALLATION SUPPORT INFORMATION



Technical support is available all around the world. In US our technicians are locally based in a major city such as Los Angeles, Chicago, Dallas, New York, Miami. Our company has a technical teams based in Europe and technical and installation support are available for all international clients in any world destination.

Warranty period 1 year	FREE
Extended warranty up to 3 years	Choose plan from USD159 per month
Repair call out charge (after warranty support)	From USD250 + technician trip expenses + replacement parts
Installation expenses by client	FREE installation support via video conference
Installation expenses by manufacturer's technicians	Simple level installation USD750, middle level installation USD1,500, high level installation USD2,500 + technician trip expenses + installation parts

Does training included and how much the Training certificate costs



Yes, VACUACTIVUS representatives will provide a training how to operate and maintain equipment. It is free over the video conference, but the owner of equipment should order training in person using manufacturer's trainers. In this case owner of equipment will reimburse trainer trip expenses to reach destination. Safety training should be provided by a local nitrogen supplier for free or ask VACUACTIVUS manufacturer representative about it. After training an employee will get issued a Training certificate which costs USD25 for electronic version and USD199 for hard printed

version on aluminum surface and wood frame, which should be hanged on a wall.

Do I need obtain any special licenses for operate cryotherapy chamber? Do I need to have MD, nurse or esthetician license to operate cryotherapy business?

No, any special licenses or permits are not required to operate cryotherapy business. Just regular business license. Cryotherapy chamber could be operated by any person trained by manufacturer with training certificate issued by manufacturer.

Can I import cryotherapy chamber overseas? Does FDA or any other health permits or approvals required?

Any cryotherapy chamber is not medical equipment and it related to fitness rehabilitation and wellness purposes, therefore FDA or any other health permits are not required for import a such equipment overseas. Please contact our international sales department via email vacuactivus@gmail.com and our experienced sales representatives will provide more detailed information for import and forward to your destination.

Any extra taxes and fees should be applied?

US Based clients: 9,5% sales tax will be charged for sales inside California, if California Reseller certificate is not not provides. NO SALES TAX applied for any sales around US outside California.

EU based clients: 23% VAT will be applied for sales inside Poland or around EU countries, if EU VAT certificate is not provided or not valid in European commission system.

International clients: no any extra taxes applied up to price for export.



LEASING AND FINANCE OPTION



VACUACTIVUS is a manufacturer and could provide just purchase option from our side. But our partners could offer a leasing and finance options on our products (available for US and UK based clients only). Finance could have a different terms from 12 to 36 months with possibly discounted interest rate. Any leasing or finance offer is a subject of approval from Lender and depends of financial paperwork of Lessor.

Please contact sales department VACUACTIVUS vacuactivus@gmail.com to ask more information regarding leasing/finance.

RISK ASSESSMENT GUIDELINES

VACUACTIVUS as a leading cryotherapy equipment manufacturer works closely with a local nitrogen suppliers to ensure that our clients receive the best support in terms of nitrogen delivery and health and safety. VACUACTIVUS will contact your local nitrogen safety specialist so that you can organize an assessment of the nitrogen storage safety in your treatment room.

RISK ASSESSMENT PRECAUTIONS

Ventilation

Must be adequate to maintain the atmosphere at 19-19,5% oxygen (normal atmospheric oxygen concentration). If the room size is not sufficient for nitrogen storage, ventilation is required so that air flow can escape the building. This may mean installing vents at the bottom of the treatment room door or fitting ventilators. If the treatment room has windows that open at waist height or lower, then this may also be sufficient.

All cryogenic dewar vessels are unpressurised and will experience gas evaporation as a result of the heat from the atmosphere. Generally 1% to 2% of the liquid content is converted to gas in 24 hours. When pressurized dewar vessels are in use, the vapor being exposed via release valve mounted on tank to the atmosphere is not hazardous in a well ventilated area.

Alarm Systems

For peace of mind and high level safety it is recommended that all operators of the Active Cryo have oxygen sensor monitor with warning alarm. The alarm will monitor oxygen levels within the treatment room so that the room remains safe at all times. Estimated price of a regular oxygen level monitor could be in range \$299-700 depends of model and could be ordered from VACUACTIVUS or from local nitrogen supplier.

Access

Dewar vessels should be located close to machine. Recommended location close to vent exhaust or window avoid any heating elements within 3 meters (10') Nitrogen tanks need to be refilled in open air or delivered by authorized personnel of nitrogen supplier. VACUACTIVUS strictly advise to follow installation guide, safety training guidance and liquid nitrogen usage requirements (ask sales department to provide more information about it)

ActiveCryo and CryoV2 has 4" (100mm) vent exhaust, which should be connected to separate or existed vent line in premise.

ROOM VENTILATION REQUIREMENTS

Room with cryotherapy chamber must have an adequate ventilation system.



MINIMUM ROOM SIZE for cryotherapy chamber location

The manufacturer recommended room from 9m² or 100sf with ventilation and oxygen sensor monitor alarm to locate ActiveCryo or CryoV2 cryotherapy chamber.





In case of any extra questions, feel free to contact
Sales Department of VACUACTIVUS
for more information e-mail:
vacuactivus@gmail.com

+1-310-467-9723 (USA)
+48-58-731-0931 (PL)
+44 20 3289 1959 (UK)
+380 67 370 12 00 (UA/RUS/BY)
+61 73 1033833 (AU)