



sale@vacuactivus.com

KZ +7 777 800-91-34

UK +44 20 36428033

MX +52 55 11 638974

BR +55 11 31973950

US +1 310 4679723

EU +48 884 191520

www.vacuactivus.com

VACUACTIVUS | World
MEDSTARCOM | Leading
Manufacturer



FITNESS

WELLNESS

REHABILITATION

LONGEVITY

BIOHACKING



www.vacuactivus.com

 **Cryotherapy
devices**

- 4 Antarctica barrel whole body chamber electric
- 6 Antarctica barrel S whole body chamber electric
- 8 Antarctica whole body chamber electric
- 10 Antarctica open head electric
- 12 Cryostar nitrogen cryotherapy chamber
- 14 Antarctica whole body chamber nitrogen
- 16 Antarctica open head nitrogen
- 18 Iceberg localized cryotherapy machine electric
- 20 Iceberg localized cryotherapy machine 50L nitrogen
- 22 Iceberg localized cryotherapy machine 25L nitrogen
- 24 Iceberg cryonick roller
- 26 Iceberg cryonick roller mini

 **Fitness
devices**

- 29 Infrastar infrared vacuum bike
- 31 Infrastar Sole infrared vacuum bike
- 33 Vacustar vacuum infrared treadmill
- 35 InfraRunick infrared treadmill
- 37 Hot Cryo Yoga Pilates
- 39 InfraStepper

 **Lymphatic
massage rollers**

- 41 Rollstar lymphatic massage roller
- 43 Rollstar mini lymphatic massage roller
- 46 Rollstar mini S lymphatic massage roller
- 48 Rollstar mini SQ lymphatic massage roller

 **Wellness
SPA devices**

- 51 Revique HaloX longevity capsule
- 53 Red light couch
- 55 Silhouette shaper
- 57 Silhouette shaper EMS
- 59 De-Stress lounge
- 61 Medsanistar disinfection access station



Cryotherapy devices

www.vacuactivus.com

Antarctica CryoBarrel

PROFESSIONAL

4

The Antarctica Barrel electric cryotherapy chamber is a cutting-edge, fully electric system used for whole-body cryotherapy. Unlike traditional cryotherapy chambers that use liquid nitrogen, electric cryotherapy chambers rely on electricity to generate and regulate ultra-low temperatures, typically between -110°C and -140°C (-166°F to -220°F). These chambers offer a more consistent and controlled cooling experience.

The Antarctica model likely stands out for its advanced features, energy efficiency, and safety measures, designed to provide therapeutic benefits like muscle recovery, reduced inflammation, pain relief, and overall well-being. It is often used in sports rehabilitation centers, spas, and wellness clinics. The electric design also makes it more environmentally friendly and easier to maintain compared to nitrogen-based systems.

The Antarctica Barrel electric cryo chamber is available in both single and dual compressor versions, offering flexibility to meet various needs. With its spacious interior, it allows for more effective and comfortable treatments. To install the chamber, a minimum space of 10m² (100 sq ft) is required.

ANTARCTICA BARREL WHOLE BODY CHAMBER ELECTRIC



Functions

	Simple	Grand
Cold air spaying technology	<input type="radio"/>	<input type="radio"/>
Glass door	<input type="radio"/>	<input type="radio"/>
Fully electrical, no nitrogen	<input type="radio"/>	<input type="radio"/>
Comercial 10,1" control panel	<input type="radio"/>	<input type="radio"/>
Turbo boosted by fans up to -100C/-148F		<input type="radio"/>
Turbo boosted by fans up to -75C/-100F	<input type="radio"/>	
Double glass thermal insutated	<input type="radio"/>	<input type="radio"/>
Single compressor up to 6kW cooling power	<input type="radio"/>	
Dual compressor up to 12kW cooling power		<input type="radio"/>
Electric line 400V or 208V three phases requires	<input type="radio"/>	<input type="radio"/>
Water Colling (plumbing required)	<input type="radio"/>	<input type="radio"/>
Water Chiller (ouststanding box)	<input type="radio"/>	<input type="radio"/>
Air Colling	option	option

5

Antarctica CryoBarrel

PROFESSIONAL



Antarctica CryoBarrel | S

PROFESSIONAL

6

The Antarctica Barrel S Electric Cryotherapy Chamber is a state-of-the-art, fully electric system designed for whole-body cryotherapy. Featuring a left-side standing technical box, it utilizes electricity instead of liquid nitrogen to achieve ultra-low temperatures ranging from -80°C to -110°C (-100°F to -146°F). This innovative design ensures consistent and precisely controlled cooling for an enhanced cryotherapy experience.

Renowned for its advanced features, energy efficiency, and robust safety measures, the Antarctica model is tailored to deliver therapeutic benefits such as muscle recovery, inflammation reduction, pain relief, and overall wellness. Its environmentally friendly electric system requires less maintenance compared to nitrogen-based chambers, making it a preferred choice for sports rehabilitation centers, spas, and wellness clinics.

The chamber is available in single or dual compressor configurations, providing flexibility to suit diverse operational needs. Its spacious interior ensures comfortable and effective treatments. Installation requires a minimum of 10 square meters (100 square feet) of space, along with a three-phase electrical connection and water/drain piping.

ANTARCTICA BARREL S WHOLE BODY CHAMBER ELECTRIC



Functions

	Simple	Grand
Cold air spaying technology	<input type="radio"/>	<input type="radio"/>
Glass door	<input type="radio"/>	<input type="radio"/>
Fully electrical, no nitrogen	<input type="radio"/>	<input type="radio"/>
Comercial 10,1" control panel	<input type="radio"/>	<input type="radio"/>
Turbo boosted by fans up to -100C/-148F		<input type="radio"/>
Turbo boosted by fans up to -75C/-100F	<input type="radio"/>	
Double glass thermal insutated	<input type="radio"/>	<input type="radio"/>
Single compressor up to 6kW cooling power	<input type="radio"/>	
Dual compressor up to 12kW cooling power		<input type="radio"/>
Electric line 400V or 208V three phases requires	<input type="radio"/>	<input type="radio"/>
Water Colling (plumbing required)	<input type="radio"/>	<input type="radio"/>
Water Chiller (ouststanding box)	<input type="radio"/>	<input type="radio"/>
Air Colling	option	option

7

Antarctica CryoBarrel | S

PROFESSIONAL





Antarctica is a fully electric cryotherapy chamber that uses electricity instead of liquid nitrogen to achieve extremely low temperatures, typically between -80°C and -110°C (-100°F to -146°F). Unlike traditional nitrogen-based chambers, which rely on liquid nitrogen for cooling, electric cryotherapy chambers utilize a cooling system similar to large freezers, employing air compression or refrigeration technology.

Key Features of Fully Electric Cryotherapy Chambers:

- Nitrogen-Free: No need for liquid nitrogen, making it safer and more convenient.
- Even Temperature Distribution: Ensures consistent cooling across the entire chamber.
- Safety: Designed with advanced safety features for peace of mind.
- Environmentally Friendly: A cleaner, greener option compared to nitrogen-based units.
- Ease of Use: Simple to operate, with intuitive controls and minimal setup.

With its affordable price and easy installation, the Antarctica model has become a best-seller in the market. These chambers are commonly used in wellness centers, sports clinics, and spas, offering effective solutions for sports rehabilitation and whole-body recovery.

**ANTARCTICA
WHOLE BODY CHAMBER
ELECTRIC**



Functions

	Simple	Grand
Cold air spraying technology	<input type="radio"/>	<input type="radio"/>
Glass door	<input type="radio"/>	<input type="radio"/>
Fully electrical, no nitrogen	<input type="radio"/>	<input type="radio"/>
Comercial 10,1" control panel	<input type="radio"/>	<input type="radio"/>
Turbo boosted by fans up to -100C/-148F		<input type="radio"/>
Turbo boosted by fans up to -75C/-100F	<input type="radio"/>	
Double glass thermal insutated		<input type="radio"/>
Single compressor up to 6kW cooling power	<input type="radio"/>	
Dual compressor up to 12kW cooling power		<input type="radio"/>
Water cooling (plumbing required)	<input type="radio"/>	<input type="radio"/>
Electric line 400V or 208V three phases requires	<input type="radio"/>	<input type="radio"/>
Water Chiller (ouststanding box)	<input type="radio"/>	<input type="radio"/>





The Antarctica Electric Open-Head Cryotherapy Chamber is designed for users who prefer to keep their head outside while their body is immersed in cold air. This open-head design offers comfort for those who may feel claustrophobic or want to avoid extreme cold around the face.

Key Features:

- Head Outside the Chamber: Only the body is exposed to cold air, keeping the head at room temperature.
- Electric Cooling System: Uses electricity for consistent, safe temperature control, unlike liquid nitrogen chambers.
- Controlled Cold Exposure: Provides whole-body benefits with temperatures ranging from -80°C to -110°C.
- Ergonomic Design: Adjustable for different heights, ensuring comfort with the head outside the chamber.

Benefits:

- Reduced Claustrophobia: The open design allows users to feel more comfortable and in control.
- Safety and Comfort: Keeps the head at room temperature, making it easier to breathe and tolerate.
- Full Cryotherapy Benefits: Offers muscle recovery, pain relief, improved circulation, and mental health benefits.
- User-Friendly: Easy to communicate with the technician during the session for a more personalized experience.

This chamber is ideal for wellness centers, fitness clubs, and rehabilitation facilities looking to offer effective cryotherapy treatments.

ANTARCTICA OPEN HEAD ELECTRIC



Functions

	Simple	Grand
Indirect spaying technology	<input type="radio"/>	<input type="radio"/>
Frosted glass door	<input type="radio"/>	<input type="radio"/>
Fully electrical, no nitrogen	<input type="radio"/>	<input type="radio"/>
Comercial 10,1" control panel	<input type="radio"/>	<input type="radio"/>
Turbo boosted by fans up to -100C/-148F		<input type="radio"/>
Turbo boosted by fans up to -75C/-100F	<input type="radio"/>	
Double glass thermal insutated		<input type="radio"/>
Single compressor up to 6kW cooling power	<input type="radio"/>	
Dual compressor up to 12kW cooling power		<input type="radio"/>
Manual pads adjust height inside	<input type="radio"/>	<input type="radio"/>
Top cover	<input type="radio"/>	<input type="radio"/>
Water cooling (plumbing required)	<input type="radio"/>	<input type="radio"/>
Air cooling (extra vent lines required)	<input type="radio"/>	
Water Chiller (ouststanding box)	<input type="radio"/>	<input type="radio"/>
Air Colling	option	option





CryoStar Cryotherapy Chamber uses liquid nitrogen to rapidly cool the chamber to ultra-low temperatures as low as -170°C (-256°F), providing fast and efficient whole-body cryotherapy.

Key Features:

- Nitrogen Cooling: Uses liquid nitrogen, a non-toxic gas, for efficient cooling.
- Rapid Cooling: Achieves ultra-low temperatures quickly, ideal for short sessions (2-3 minutes).
- Open-Head Design: Many models feature an open-head design for comfort.
- Adjustable Temperatures: Precise control, usually between -140°C and -170°C.
- Compact Design: Modern and sleek, suitable for high-end wellness centers.

Benefits:

- Quick Recovery: Faster cooling helps athletes and those seeking quick recovery.
- Energy-Efficient: Uses liquid nitrogen, reducing reliance on electricity.
- Muscle Recovery: Reduces inflammation, soreness, and joint pain.
- Improved Circulation: Enhances blood flow and tissue repair.
- Mental Wellness: Boosts mood, reduces stress, and alleviates anxiety.
- Weight Loss: Stimulates metabolism, increasing calorie burn.
- Skin Health: Boosts collagen production and reduces aging signs.

CryoStar chambers are commonly used in sports rehab, wellness clinics, spas, and fitness centers for effective cold therapy.

CRYOSTAR CRYOTHERAPY CHAMBER NITROGEN



Functions

	Simple	Grand	Grand+
Indirect spaying technology	○	○	○
Auto drying system	○	○	○
Automatic lift up to 150kg	○	○	○
Automatic door opening	○	○	○
Thermal imaging camera		○	○
Oxygen sensor monitor			○
Nitrogen hose included		○	○
Glass exterior			○
10.1 color display	○	○	○
Large TV display on top 24"			○





Antarctica Whole-Body Cryotherapy Chamber combines liquid nitrogen cooling with advanced air circulation systems for a safer, more controlled cold therapy experience. It uses nitrogen to cool the air, which is then circulated around the body, ensuring even temperature distribution.

Key Features:

- Nitrogen Cooling: Uses liquid nitrogen to cool air to -110°C to -140°C (-166°F to -220°F), with no direct nitrogen exposure to users.
- Cold Air Circulation: Ensures even cooling throughout the chamber for consistent treatment.
- Whole-Body Exposure: The user's entire body, including the head, is exposed to the cold air for uniform treatment.
- Precise Temperature Control: Adjusts temperature based on user needs for a controlled cryotherapy session.
- Safety Measures: Ventilation systems prevent risks of nitrogen burns or inhalation.

Benefits:

- Even Cooling: Provides a more effective treatment with uniform cold distribution.
 - Muscle Recovery: Reduces inflammation, soreness, and aids in faster muscle recovery.
 - Improved Circulation: Stimulates blood flow for faster healing and recovery.
 - Mental Health: Boosts mood and reduces anxiety through endorphin and adrenaline release.
 - Skin Health: Enhances skin elasticity, collagen production, and reduces wrinkles.
 - Weight Loss: Stimulates metabolism, increasing calorie burn after treatment.
 - Comfort & Safety: Cold air is well-distributed, offering a comfortable and safe experience without direct nitrogen exposure.
- The Antarctica Cryotherapy Chamber is ideal for wellness centers, spas, and sports rehabilitation clinics, offering a safe and effective cryotherapy solution for recovery, performance enhancement, and overall wellness.

**ANTARCTICA
WHOLE BODY CHAMBER
NITROGEN**



Functions

	Simple	Grand
Cold air spaying technology	<input type="radio"/>	<input type="radio"/>
Glass door	<input type="radio"/>	<input type="radio"/>
7' temperature display inside	<input type="radio"/>	<input type="radio"/>
100% breathable air, no vapor of nitrogen inside	<input type="radio"/>	<input type="radio"/>
Comercial 10,1" control panel	<input type="radio"/>	<input type="radio"/>
Cold air therapy up to -140C/-220F	<input type="radio"/>	<input type="radio"/>
Nitrogen hose included		<input type="radio"/>
Double glass thermal insutated		<input type="radio"/>
LED lights exterior		<input type="radio"/>
Space lights and relax music inside		<input type="radio"/>
Luxury waterproof interior material		<input type="radio"/>
Air Colling	option	option





Antarctica Nitrogen Cryotherapy Chamber (Open Head Version) offers whole-body cryotherapy while keeping the user's head outside the chamber, providing a more comfortable experience. It uses liquid nitrogen to cool the air, achieving temperatures between -110°C and -140°C (-166°F to -220°F).

Key Features:

- Open-Head Design: Keeps the head outside the chamber for a more comfortable and less claustrophobic experience.
- Nitrogen Cooling System: Uses liquid nitrogen to cool the air, circulating it around the body for effective therapy.
- Controlled Temperature & Airflow: Ensures even distribution of cold air for optimal results.
- Quick Cooling: Rapid temperature drop with sessions typically lasting 2-3 minutes.

Benefits:

- Reduced Claustrophobia: Alleviates discomfort from enclosed spaces, providing a relaxing experience.
- Enhanced Safety & Comfort: Keeps the head at ambient temperature, making it ideal for those sensitive to cold air.
- Improved Communication: Users can easily communicate with the technician during the session.
- Mental Well-Being: Helps reduce anxiety and improve mental focus.
- Full-Body Treatment: Ensures the body receives full benefits like muscle recovery and improved circulation.
- Longer Sessions: Comfort allows for longer cryotherapy sessions, maximizing benefits.

Applications:

Ideal for wellness centers, sports rehab clinics, spas, and fitness facilities, this open-head design combines effective nitrogen cryotherapy with enhanced user comfort and safety.

**ANTARCTICA
OPEN HEAD
NITROGEN**



Functions

Simple

Grand

Platinum Jets Spaying technology

○

○

Auto drying system

○

○

Automatic lift up to 150kg /350lb

○

○

Frosted glass door

○

○

Thermal imaging camera

○

Oxygen sensor monitor

○

Nitrogen hose included

○

Double glass thermal insulated

○

Large 24" TV display on top

○

Comercial 10,1" control panel

○

○

PROFESSIONAL





Iceberg Localized Cryotherapy Machine and LED Mask are advanced tools for targeted skin care and recovery treatments.

Iceberg Localized Cryotherapy Machine:

Designed for focused cold therapy, it targets specific areas of the body, such as injuries, inflammation, or pain management.

Key Features:

- Precise Temperature Control: Ensures effective treatment without discomfort.
- Handheld Applicators: Allows targeted cold therapy on specific areas.
- Quick Application: Sessions last 5-15 minutes.
- Non-Invasive: A non-invasive treatment for pain and inflammation.

Benefits:

- Pain Relief: Targets specific pain areas, ideal for athletes.
- Reduced Inflammation: Speeds up recovery from injuries.
- Muscle Recovery: Reduces soreness and fatigue.
- Improved Circulation: Promotes healing in treated areas.
- LED Mask:
- A skincare device that uses LED light to address various skin concerns.

Benefits:

- Skin Rejuvenation: Improves skin elasticity and reduces wrinkles.
- Acne Treatment: Clears breakouts and inflammation.
- Improved Complexion: Evens skin tone and reduces pigmentation.

Combined Use:

Using both tools together enhances results by reducing inflammation and promoting healing for faster recovery and skin rejuvenation.

**ICEBERG LOCALIZED
CRYOTHERAPY MACHINE
ELECTRIC**



Functions

Simple

Grand

Cold Air electrical compressor
1,5kW up to -30c/-22F



Advanced touch screen display 10.1



Variety of automatic programs
for all parts of body



4 speeds of blowing



Check temperature on skin



Red light adjuster of distance
between handle and skin



Thermal imaging handle option 1



LED cryo facial mask option 2



PROFESSIONAL





Iceberg Localized Cryotherapy Machine uses liquid nitrogen to deliver targeted cold therapy for pain relief, inflammation reduction, and recovery.

Key Features:

- Nitrogen-Based Cooling: Uses liquid nitrogen to achieve temperatures from -110°C to -150°C for rapid, effective treatment.
- Handheld Applicator: Focuses cold therapy on specific body areas like joints and muscles.
- Adjustable Temperature: Customizable settings for optimal comfort.
- Quick Treatment: Sessions last 5-15 minutes per area.
- Portable Design: Compact and suitable for clinics, gyms, or at-home use.

Benefits:

- Pain Relief: Effective for sports injuries, arthritis, and chronic pain.
- Reduced Inflammation: Speeds up recovery and reduces swelling.
- Muscle Recovery: Alleviates soreness and fatigue.
- Improved Circulation: Enhances blood flow to treated areas.
- Non-Invasive: Safe with minimal side effects.
- Versatile: Ideal for conditions like muscle strains, joint pain, and tendonitis.

Applications:

Used in wellness centers, sports clinics, and gyms for targeted cryotherapy treatments. The Iceberg machine is an effective, non-invasive solution for pain management and recovery.

**ICEBERG LOCALIZED
CRYOTHERAPY MACHINE
50L NITROGEN**



Functions

Simple

Grand

50L built-in tank



Advanced touch screen display 10.1



Variety of automatic programs for all parts of body



Nitrogen level sensor



4 speeds of blowing



Check temperature on skin



Red light adjuster of distance between handle and skin



Thermal imaging handle



PROFESSIONAL





The Iceberg Local Cryo Machine with a 25L nitrogen capacity is a specialized device for targeted cryotherapy using liquid nitrogen. It is designed to alleviate pain, reduce inflammation, and enhance recovery by applying extreme cold to specific areas.

Key Features:

- 25L Nitrogen Capacity: Sufficient for multiple treatment sessions, ideal for clinics and wellness centers.
- Localized Treatment: Targets specific areas like joints or muscles for focused therapy.
- Handheld Applicator: Allows precise application of cold therapy to problem spots.
- Adjustable Temperature Control: Offers customizable settings, reaching temperatures as low as -160°C (-246°F).
- User-Friendly Interface: Easy-to-use control panel for operators.
- Portability: Easily moved between treatment areas.

Benefits:

- Pain Relief: Rapid relief from acute or chronic pain, popular among athletes.
- Reduced Inflammation: Speeds recovery by reducing inflammation in targeted areas.
- Muscle Recovery: Helps reduce soreness and fatigue post-exercise.
- Improved Circulation: Enhances blood flow and promotes healing.
- Non-Invasive: Safe with minimal side effects, suitable for various users.
- Quick Treatment: Sessions last 5-15 minutes for efficient use.

Applications:

Common in sports rehab clinics, physical therapy practices, wellness centers, and spas, particularly for athletes, chronic pain sufferers, and post-surgical recovery.

The Iceberg Local Cryo Machine offers effective, localized cryotherapy for pain relief, muscle recovery, and inflammation reduction.

**ICEBERG LOCALIZED
CRYOTHERAPY MACHINE
25L NITROGEN**



Functions

Simple

Grand

25L built-in tank



Advanced touch screen display 10.1



Variety of automatic programs
for all parts of body



Nitrogen level sensor



4 speeds of blowing



Check temperature on skin



Red light adjuster of distance
between handle and skin



Thermal imaging handle



PROFESSIONAL





Iceberg Cryonick Roller is an advanced device for non-invasive body contouring, skin tightening, and fat reduction using cryotherapy (cold) and thermotherapy (heat). Here's a concise overview of its features and benefits:

Key Features:

- Cryotherapy & Thermotherapy: Combines cold to freeze fat cells and heat to promote circulation and collagen production.
- Versatile Treatment: Targets areas like the abdomen, thighs, arms, and face for body contouring, cellulite reduction, and facial rejuvenation.
- Non-Invasive: No surgery or anesthesia required, with minimal discomfort and no downtime.
- User-Friendly: Digital interface to adjust temperature, duration, and target area.
- Safety Features: Monitors and controls temperatures for a safe experience.

Benefits:

- Fat Reduction: Cold therapy destroys fat cells, leading to a more contoured body.
- Skin Tightening: Heat boosts collagen, firming and tightening skin.
- Cellulite Reduction: Improves circulation and lymphatic drainage, reducing cellulite appearance.
- Quick Sessions: Treatments last 30-60 minutes with no recovery time.
- Convenience: Immediate return to regular activities post-treatment.

Applications:

Ideal for individuals seeking non-invasive fat reduction, skin tightening, and cellulite treatment, commonly offered at wellness and beauty centers. Overall, the Iceberg Cryonick Roller offers an efficient, non-invasive solution for body contouring and skin rejuvenation.

**ICEBERG
CRYONICK
ROLLER**



Functions

	Simple Roll	Simple Cryo	Grand
10.1' touch screen console	<input type="radio"/>	<input type="radio"/>	<input type="radio"/>
Slimming	<input type="radio"/>	<input type="radio"/>	<input type="radio"/>
Body contouring	<input type="radio"/>	<input type="radio"/>	<input type="radio"/>
Portable lymphatic massage roller	<input type="radio"/>		<input type="radio"/>
Cryonick fat reduction & skin tone		<input type="radio"/>	<input type="radio"/>
Cold/Heat transfer handle -22C/-8F up to +45C/+113C		<input type="radio"/>	<input type="radio"/>





Iceberg Cryonick Roller Mini is a compact aesthetic device designed for body contouring, skin improvement, and lymphatic drainage. It combines mechanical vibration, compression therapy, and cryo-shock to deliver therapeutic benefits. Here's a concise overview:

Key Features:

- Mechanical Roller System: Stimulates circulation and lymphatic flow with rhythmic pressure and vibration.
- Vibration Therapy: Enhances blood flow and muscle relaxation.
- Customizable Settings: Adjust intensity, speed, and treatment duration for personalized sessions.
- Ergonomic Design: Targets multiple body areas like legs, abdomen, arms, and back.
- Non-Invasive: No downtime or discomfort, making it convenient for users.

Benefits:

- Improved Lymphatic Drainage: Reduces fluid retention and promotes detoxification.
- Enhanced Circulation: Boosts blood flow for better skin health and oxygen delivery.
- Cellulite Reduction: Breaks down fat deposits and improves skin texture.
- Body Contouring: Shapes and tones specific body areas.
- Muscle Relaxation: Relieves muscle tension and provides pain relief.
- Skin Firming: Promotes collagen production for tighter skin.

Applications:

Individuals seeking body contouring, skin rejuvenation, and muscle recovery.
Wellness centers and spas offering advanced treatments.
The Iceberg Cryonick Roller Mini is an effective, non-invasive solution for improving body shape, skin health, and overall wellness.

**ICEBERG
CRYONICK
ROLLER MINI**



Functions

	Simple Roll	Simple Cryo	Grand
10.1' touch screen console	○	○	○
Slimming	○	○	○
Body contouring	○	○	○
Portable lymphatic massage roller	○		○
Cryonick fat reduction & skin tone		○	○
Cold/Heat transfer handle -22C/-8F up to +45C/+113C		○	○





Fitness devices

www.vacuactivus.com



InfraStar Vacuum Infrared Cryo Bike is a cutting-edge fitness and recovery device that integrates infrared therapy, vacuum technology, and cryotherapy to boost performance and recovery.

Key Features:

- Infrared Technology: Penetrates skin to improve circulation, reduce muscle tension, and enhance recovery.
- Vacuum System: Increases blood flow, promotes lymphatic drainage, and boosts calorie burn during exercise.
- Cryotherapy Integration: Provides localized cooling to reduce inflammation and muscle soreness post-workout.
- User-Friendly Design: Adjustable settings for temperature, vacuum pressure, and exercise intensity, with a digital interface for tracking performance.
- Ergonomic Structure: Comfortable seating and adjustable handlebars for users of all sizes.

Benefits:

- Enhanced Recovery: Reduces muscle soreness and fatigue, accelerating recovery post-exercise.
- Improved Performance: Boosts circulation, flexibility, and muscle recovery for better athletic performance.
- Caloric Burn: Increases metabolism, aiding in weight management.
- Detoxification: Promotes lymphatic drainage for improved health.
- Pain Relief: Alleviates chronic pain and relaxes muscles.

Applications:

Ideal for athletes, fitness enthusiasts, and individuals with chronic pain. Commonly found in wellness centers, sports rehab clinics, and gyms.

The InfraStar Bike provides a comprehensive solution for both fitness and recovery in one machine.

INFRASTAR
INFRARED
VACUUM BIKE



Functions

	Simple		Grand	
Vacuum technology	<input type="radio"/>	<input type="radio"/>	<input type="radio"/>	<input type="radio"/>
Infrared technology	<input type="radio"/>	<input type="radio"/>	<input type="radio"/>	<input type="radio"/>
Collagen lamp		<input type="radio"/>	<input type="radio"/>	<input type="radio"/>
Aromatherapy			<input type="radio"/>	<input type="radio"/>
Regular color touch screen 10.1" no video	<input type="radio"/>	<input type="radio"/>		
Virtual reality display 10.1-13.6" (Netflix, Radio Garden, Facebook, YouTube)			<input type="radio"/>	<input type="radio"/>
Wi-fi			<input type="radio"/>	<input type="radio"/>
Cryotherapy program Up to -20C/-4F				<input type="radio"/>
Skirts included	2	3	5	5
Iphone/android application control			<input type="radio"/>	<input type="radio"/>
Bluetooth headphones			<input type="radio"/>	<input type="radio"/>
Cool & Heat turbo arm therapy			<input type="radio"/>	<input type="radio"/>
Real EMS (biceps, shoulders, belly areas)			<input type="radio"/>	<input type="radio"/>
Red lights therapy pads (face mask, biceps, belly area)	<input type="radio"/>	<input type="radio"/>	<input type="radio"/>	<input type="radio"/>





InfraStar Vacuum Infrared Cryo Bike is a cutting-edge fitness and recovery device that integrates infrared therapy, vacuum technology, and cryotherapy to boost performance and recovery.

Key Features:

- Infrared Technology: Penetrates skin to improve circulation, reduce muscle tension, and enhance recovery.
- Vacuum System: Increases blood flow, promotes lymphatic drainage, and boosts calorie burn during exercise.
- Cryotherapy Integration: Provides localized cooling to reduce inflammation and muscle soreness post-workout.
- User-Friendly Design: Adjustable settings for temperature, vacuum pressure, and exercise intensity, with a digital interface for tracking performance.
- Ergonomic Structure: Comfortable seating and adjustable handlebars for users of all sizes.

Benefits:

- Enhanced Recovery: Reduces muscle soreness and fatigue, accelerating recovery post-exercise.
- Improved Performance: Boosts circulation, flexibility, and muscle recovery for better athletic performance.
- Caloric Burn: Increases metabolism, aiding in weight management.
- Detoxification: Promotes lymphatic drainage for improved health.
- Pain Relief: Alleviates chronic pain and relaxes muscles.

Applications:

Ideal for athletes, fitness enthusiasts, and individuals with chronic pain. Commonly found in wellness centers, sports rehab clinics, and gyms.

The InfraStar Bike provides a comprehensive solution for both fitness and recovery in one machine.

INFRASTAR
INFRARED
VACUUM BIKE



Functions

	Simple		Grand	
Automatic opening	○	○	○	○
Vacuum technology	○	○	○	○
Infrared technology	○	○	○	○
Collagen lamp		○	○	○
Aromatherapy			○	○
Regular color touch screen 10.1" no video	○	○		
Virtual reality display 10.1-13.6" (Netflix, Radio Garden, Facebook, YouTube)			○	○
Wi-fi			○	○
Cryotherapy program Up to -20C/-4F				○
Skirts included	2	3	5	5
Iphone/android application control			○	○
Bluetooth headphones			○	○
Cryo&Heat turbo arm therapy			○	○
Real EMS (biceps, shoulders, belly areas)			○	○
Red lights therapy pads (face mask, biceps, belly area)	○	○	○	○





VacuStar treadmill combines cryotherapy, infrared therapy, and vacuum functions to enhance fitness, recovery, and overall health.

Key features:

- Treadmill Design: Traditional treadmill for walking, jogging, or running, suitable for all fitness levels.
- Cryotherapy: Cold therapy reduces inflammation, muscle soreness, and aids recovery during exercise.
- Infrared Therapy: Infrared light improves circulation, reduces muscle tension, and promotes relaxation.
- Vacuum System: Enhances blood flow, increases calorie burn, and improves detoxification by creating a controlled pressure environment.
- User Interface: Easy-to-use digital controls to adjust temperature, vacuum pressure, and workout intensity.
- Adjustability: Adjustable incline, speed, and settings for user comfort and varying fitness goals.

Benefits:

- Enhanced Recovery: Reduces soreness and recovery time, especially for athletes.
- Improved Performance: Enhances cardiovascular fitness with a low-impact workout.
- Increased Caloric Burn: Vacuum function boosts metabolism, aiding weight management.
- Pain Relief: Infrared therapy alleviates chronic pain and improves mobility.
- Detoxification: Supports lymphatic drainage, promoting overall health.

Applications:

Athletes, fitness enthusiasts, and those with chronic pain.
Ideal for wellness centers, sports rehabilitation clinics, and gyms.
The VacuStar treadmill offers a holistic fitness solution, combining multiple therapies for improved performance, recovery, and overall wellness.

INFRASTAR
INFRARED
VACUUM BIKE



Functions

	Simple		Grand	
Commercial treadmill 2HP 3 phases motor	<input type="radio"/>	<input type="radio"/>	<input type="radio"/>	<input type="radio"/>
Vacuum technology	<input type="radio"/>	<input type="radio"/>	<input type="radio"/>	<input type="radio"/>
Infrared technology	<input type="radio"/>	<input type="radio"/>	<input type="radio"/>	<input type="radio"/>
Collagen lamp		<input type="radio"/>	<input type="radio"/>	<input type="radio"/>
Aromatherapy			<input type="radio"/>	<input type="radio"/>
Ozone therapy			<input type="radio"/>	<input type="radio"/>
Ionization			<input type="radio"/>	<input type="radio"/>
Regular color touch screen 10.1" no video	<input type="radio"/>	<input type="radio"/>		
Virtual reality 21" display			<input type="radio"/>	<input type="radio"/>
Virtual reality display 10.1-13.6" <small>(Netflix, Radio Garden, Facebook, YouTube)</small>			<input type="radio"/>	<input type="radio"/>
Wi-fi			<input type="radio"/>	
Cryo exercise program up to -20C				<input type="radio"/>
Skirts included	2	3	5	5
Iphone/android application control			<input type="radio"/>	<input type="radio"/>
Bluetooth headphones			<input type="radio"/>	<input type="radio"/>
Cryo&Heat turbo arm therapy			<input type="radio"/>	<input type="radio"/>
Real EMS <small>(biceps, shoulders, belly areas)</small>			<input type="radio"/>	<input type="radio"/>
Red lights therapy pads <small>(face mask, biceps, belly area)</small>	<input type="radio"/>	<input type="radio"/>	<input type="radio"/>	<input type="radio"/>



InfraRunick treadmill with infrared and collagen lamps combines fitness with therapeutic benefits for improved overall health. Here's a concise overview of its features and benefits:

Key Features:

Treadmill Design: Standard treadmill setup suitable for walking, jogging, or running, accommodating different fitness levels. **Infrared Therapy:** Infrared light penetrates skin to improve circulation, relax muscles, and reduce tension. **Collagen Lamps:** Stimulate collagen production to improve skin elasticity and reduce wrinkles. **User Interface:** Digital control panel to adjust speed, incline, and therapy settings while tracking key metrics. **Ergonomic Features:** Adjustable settings for speed and incline, with a comfortable running surface.

Benefits: Enhanced Recovery: Infrared and collagen therapy reduce muscle soreness and accelerate recovery.

Improved Skin Health: Collagen lamps enhance skin elasticity and reduce signs of aging.

Increased Circulation: Infrared therapy boosts blood flow, supporting cardiovascular health.

Pain Relief: Infrared light alleviates chronic pain and improves flexibility.

Weight Management: Supports calorie burn and metabolic function for weight management.

Versatile: Combines cardio, skin therapy, and recovery in one device.

Applications: Ideal for fitness enthusiasts, athletes, and individuals seeking improved skin health. It's also beneficial for wellness centers, spas, and gyms offering advanced recovery solutions. InfraRunick treadmill with infrared and collagen lamps combines fitness with therapeutic benefits for improved overall health. Here's a concise overview of its features and benefits:

Key Features: Treadmill Design: Standard treadmill setup suitable for walking, jogging, or running, accommodating different fitness levels.

Infrared Therapy: Infrared light penetrates skin to improve circulation, relax muscles, and reduce tension.

Collagen Lamps: Stimulate collagen production to improve skin elasticity and reduce wrinkles.

User Interface: Digital control panel to adjust speed, incline, and therapy settings while tracking key metrics.

Ergonomic Features: Adjustable settings for speed and incline, with a comfortable running surface.

Benefits:

Enhanced Recovery: Infrared and collagen therapy reduce muscle soreness and accelerate recovery.

Improved Skin Health: Collagen lamps enhance skin elasticity and reduce signs of aging.

Increased Circulation: Infrared therapy boosts blood flow, supporting cardiovascular health.

Pain Relief: Infrared light alleviates chronic pain and improves flexibility.

Weight Management: Supports calorie burn and metabolic function for weight management.

Versatile: Combines cardio, skin therapy, and recovery in one device.

Applications: Ideal for fitness enthusiasts, athletes, and individuals seeking improved skin health. It's also beneficial for wellness centers, spas, and gyms offering advanced recovery solutions.

INFRASTAR INFRARED VACUUM BIKE



Functions

Commercial treadmill
2HP 3 phases motor

Simple

Grand

Incline mode

Infrared lamps

Collagen lamp

Aromatherapy

Touch screen 13.6

Touch screen 15.6", 21", 32"

Virtual reality display
(Netflix, Radio Garden, Facebook)

Iphone/android application control

WiFi

Bluetooth headphones

Cryo&Heat turbo arm therapy

Real EMS (biceps, shoulders, belly areas)

Red lights therapy pads
(face mask, biceps, belly area)





HotCold Chamber combines alternating hot and cold therapy to enhance recovery, circulation, and overall wellness. Here's a concise overview of its features and benefits:

Key Features:

- Alternating Hot and Cold Therapy: Users experience both hot and cold temperatures, improving circulation and reducing muscle soreness.
- Temperature Control: Adjustable settings for both heat (infrared or steam) and cold (cryotherapy), customizable for individual needs.
- User-Friendly Design: Intuitive control panel for easy temperature adjustments, with a spacious interior for comfort.
- Therapeutic Benefits: Offers a comprehensive wellness experience by blending heat and cold therapy in one session.

Benefits:

- Enhanced Recovery: Reduces muscle soreness and speeds up recovery after exercise or injury.
- Improved Circulation: Stimulates blood flow, aiding oxygen delivery to tissues for faster healing.
- Detoxification: Sweating from heat and lymphatic drainage from cold help detoxify the body.
- Pain Relief: Effective for conditions like arthritis, muscle strains, and chronic pain.
- Relaxation and Stress Relief: Promotes relaxation, mental well-being, and physical recovery.
- Enhanced Athletic Performance: Reduces recovery time and maintains peak physical condition.
- Applications: Ideal for athletes, individuals with chronic pain, fitness enthusiasts, and wellness centers offering advanced therapeutic treatments.

The HotCold Chamber provides a modern and effective approach to wellness by combining the benefits of hot and cold therapy.

HOTCRYO
YOGA PILATES



Functions

	Simple	Grand
Virtual trainer Yoga Pilates	<input type="radio"/>	<input type="radio"/>
Infrared heating to body temperature	<input type="radio"/>	<input type="radio"/>
Loading ropes up to 1.5kg/3LB	<input type="radio"/>	<input type="radio"/>
Automatic opening platform	<input type="radio"/>	<input type="radio"/>
Automatic curtain	<input type="radio"/>	<input type="radio"/>
Color therapy	<input type="radio"/>	<input type="radio"/>
Aroma therapy	<input type="radio"/>	<input type="radio"/>
Ozone therapy	<input type="radio"/>	<input type="radio"/>
Iphone/android application control		<input type="radio"/>
Cryotherapy program Up to -20C/-4F		<input type="radio"/>
Cryo&Heat turbo arm therapy	<input type="radio"/>	<input type="radio"/>
Real EMS (biceps, shoulders, belly areas)	<input type="radio"/>	<input type="radio"/>
Oxygen therapy mask		<input type="radio"/>
Red lights therapy pads (face mask, biceps, belly area)	<input type="radio"/>	<input type="radio"/>

PROFESSIONAL





InfraStepper™ is an advanced wellness fitness system combining a professional cardio climber with infrared heat therapy and red-light collagen technology. Designed for modern gyms, medspas, wellness studios, and longevity centers, it delivers high-intensity metabolic training while supporting recovery, skin health, and cellular regeneration.

Three Technologies.

One Intelligent Workout.

Infrared Heat TherapyBuilt-in infrared panels provide deep muscle warming to improve circulation, accelerate calorie burn, and enhance detoxification through active sweating. This allows faster warm-up, reduced stiffness, and improved endurance.

Red-Light Collagen Therapy

High-performance red-light wavelengths stimulate collagen production, improve skin tone and elasticity, and support cellular renewal—transforming each workout into a beauty and anti-aging session.

Climber / Stepper Training

A low-impact, full-body climbing motion activates legs, glutes, core, and upper body. Ideal for fat loss, cardiovascular conditioning, and functional strength without joint stress.

Key Benefits

- High calorie burn with minimal joint impact
- Accelerated fat loss and metabolic activationImproved circulation and lymphatic flow
- Skin rejuvenation and collagen stimulation
- Faster recovery and muscle oxygenationIdeal for wellness, biohacking, and longevity programs
- Designed for Premium SpacesInfra
- Stepper™ features a sleek, modern design for high-end interiors. Adjustable infrared and red-light intensity, an intuitive digital control panel, and quiet operation make it suitable for boutique studios and continuous commercial use.

Ideal For

Fitness clubs, medspas, weight-loss studios, longevity centers, hotels, resorts, and premium wellness environments.

InfraStepper



Functions

Grand

Fitness climber



Infrared lamps



RedLight collagen lamp



15.6" multi vision display



PROFESSIONAL





Lymphatic massage rollers

www.vacuactivus.com



RollStar Lymphatic Massage Roller is a therapeutic device designed to enhance lymphatic drainage, improve circulation, and support overall wellness.

Key Features:

- **Lymphatic Massage:** Stimulates the lymphatic system to remove toxins and waste, mimicking manual drainage techniques.
- **Ergonomic Design:** Comfortable and portable for use on various body parts like legs, arms, and back.
- **Adjustable Pressure:** Customizable pressure for personalized comfort and therapeutic needs.
- **Durable Materials:** Built to last with high-quality materials.
- **User-Friendly:** Easy to operate with minimal setup.

Benefits:

- **Enhanced Lymphatic Drainage:** Reduces fluid retention and supports detoxification.
- **Improved Circulation:** Boosts blood flow, aiding muscle recovery and vitality.
- **Pain Relief:** Alleviates muscle tension and soreness.
- **Relaxation:** Promotes stress relief and relaxation.
- **Convenience:** Lightweight and portable for daily use at home or for your business.
- **Applications:** Ideal for athletes, fitness enthusiasts, individuals with swelling, and those recovering from surgery or injuries.

The RollStar Lymphatic Massage Roller offers an effective and convenient way to support recovery, circulation, and wellness.

ROLLSTAR LYMPHATIC MASSAGE ROLLER



Functions

Grand

Lymphatic drainage
wood roller


Change rotation



Change speed



Infrared heating



Touch screen display

10.1"

Exercise chair and pillow


Iphone/android application
control


WI-FI



PROFESSIONAL





RollStar Mini is a compact and portable lymphatic massage roller designed for effective self-massage therapy, promoting lymphatic drainage and muscle recovery.

Key Features:

- Compact Design: Small, lightweight, and portable for use at home, the gym, or while traveling.
- Ergonomic Shape: Targets specific body areas like legs, arms, back, and shoulders.
- Lymphatic Drainage: Stimulates the lymphatic system, aiding toxin removal and fluid reduction.
- Durable Materials: Built to last with high-quality materials for regular use.
- User-Friendly: Easy to operate with minimal setup, suitable for all experience levels.

Benefits:

- Enhanced Lymphatic Drainage: Reduces fluid retention and supports detoxification.
- Improved Circulation: Enhances blood flow, aiding muscle recovery and vitality.
- Convenience: Portable for daily use, anytime and anywhere.
- Pain Relief: Alleviates muscle tension and soreness post-workout.
- Stress Relief: Promotes relaxation and well-being.

Applications:

Athletes, individuals with swelling or fluid retention, fitness enthusiasts, and anyone seeking relaxation.
The RollStar Mini is an effective tool for lymphatic health and muscle recovery, offering convenience and portability.

ROLLSTAR LYMPHATIC MASSAGE ROLLER



Functions

Grand

Lymphatic drainage
wood roller


Change rotation



Change speed



Infrared heating



Touch screen display

10.1"

Exercise chair and pillow


Iphone/android application
control


WI-FI



PROFESSIONAL





RollStar Mini is a compact and portable lymphatic massage roller designed for effective self-massage therapy, promoting lymphatic drainage and muscle recovery.

Key Features:

- Compact Design: Small, lightweight, and portable for use at home, the gym, or while traveling.
- Ergonomic Shape: Targets specific body areas like legs, arms, back, and shoulders.
- Lymphatic Drainage: Stimulates the lymphatic system, aiding toxin removal and fluid reduction.
- Durable Materials: Built to last with high-quality materials for regular use.
- User-Friendly: Easy to operate with minimal setup, suitable for all experience levels.

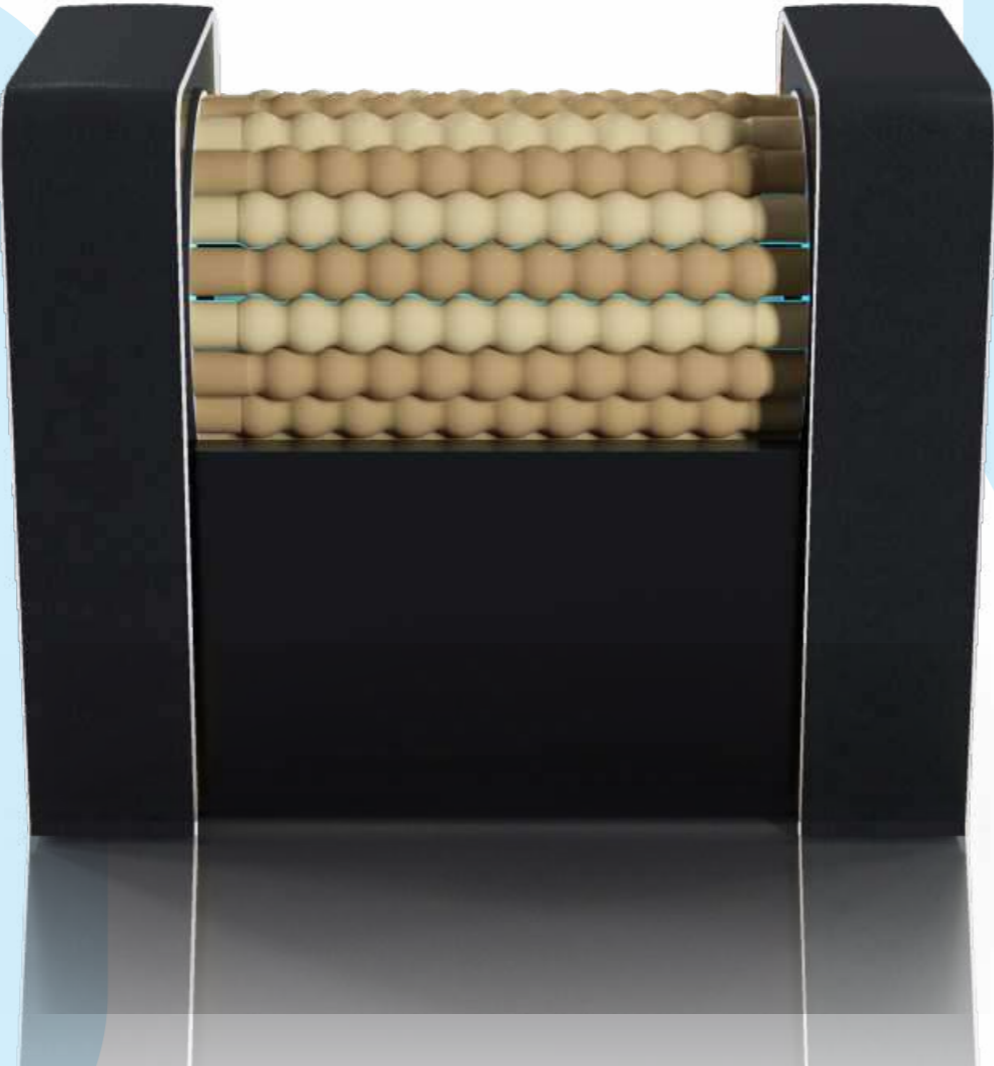
Benefits:

- Enhanced Lymphatic Drainage: Reduces fluid retention and supports detoxification.
- Improved Circulation: Enhances blood flow, aiding muscle recovery and vitality.
- Convenience: Portable for daily use, anytime and anywhere.
- Pain Relief: Alleviates muscle tension and soreness post-workout.
- Stress Relief: Promotes relaxation and well-being.

Applications:

Athletes, individuals with swelling or fluid retention, fitness enthusiasts, and anyone seeking relaxation.
The RollStar Mini is an effective tool for lymphatic health and muscle recovery, offering convenience and portability.

ROLLSTAR MINI SQ
LYMPHATIC MASSAGE
ROLLER



Functions

Grand

Lymphatic drainage
wood roller



Change rotation



Change speed



Infrared heating



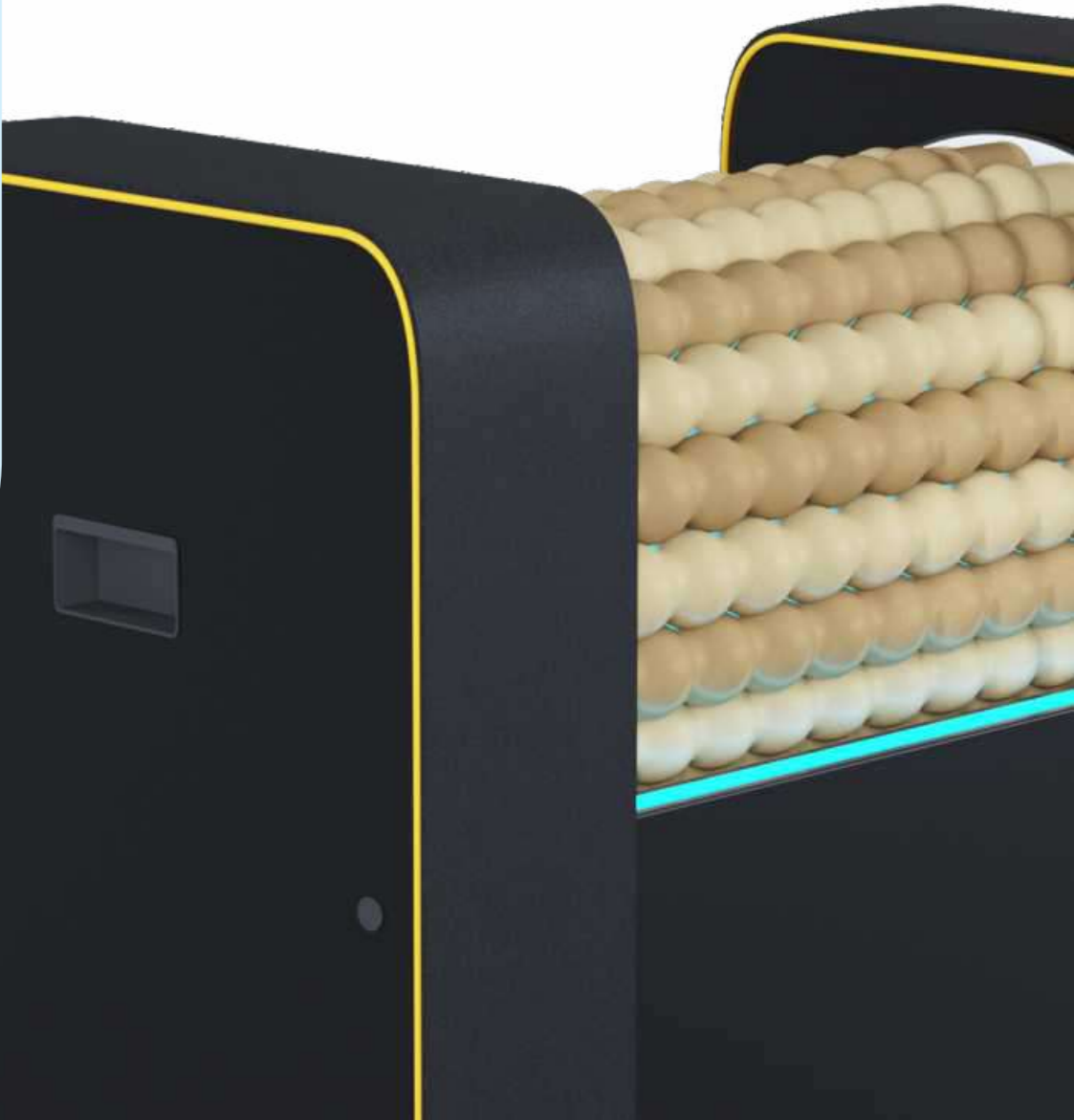
Smart Control scroller



Collagen lamp



PROFESSIONAL





RollStar Mini is a compact and portable lymphatic massage roller designed for effective self-massage therapy, promoting lymphatic drainage and muscle recovery.

Key Features:

- Compact Design: Small, lightweight, and portable for use at home, the gym, or while traveling.
- Ergonomic Shape: Targets specific body areas like legs, arms, back, and shoulders.
- Lymphatic Drainage: Stimulates the lymphatic system, aiding toxin removal and fluid reduction.
- Durable Materials: Built to last with high-quality materials for regular use.
- User-Friendly: Easy to operate with minimal setup, suitable for all experience levels.

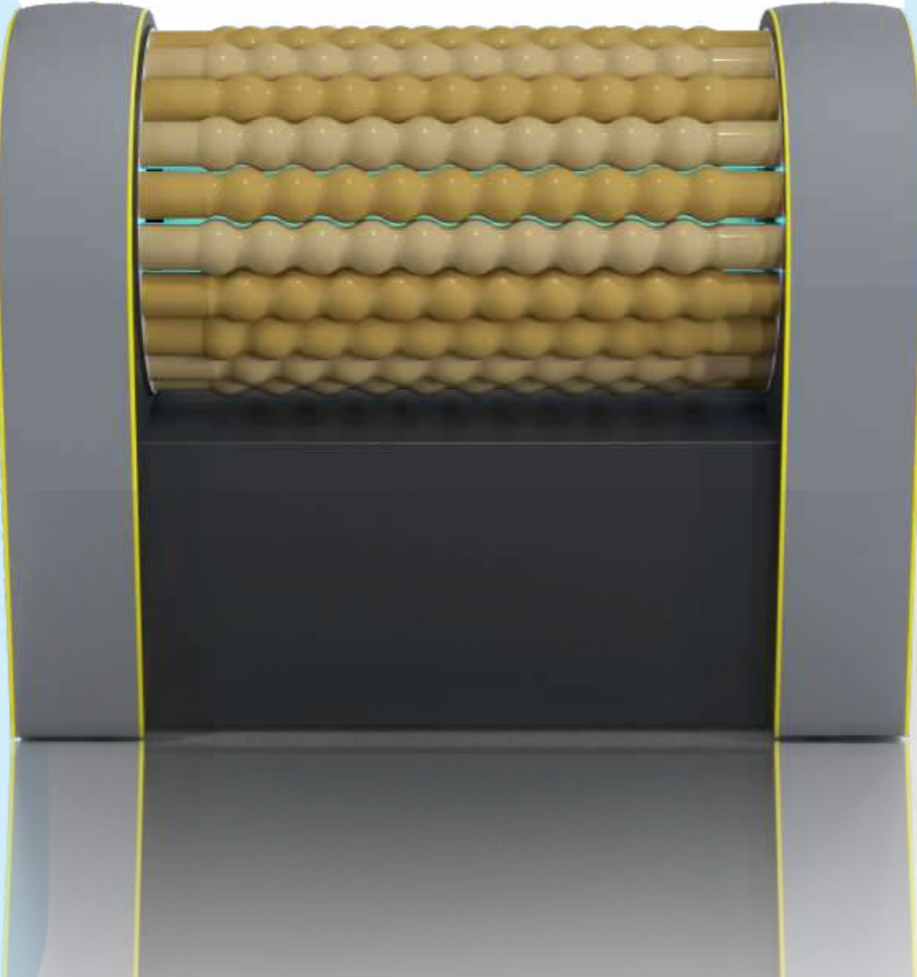
Benefits:

- Enhanced Lymphatic Drainage: Reduces fluid retention and supports detoxification.
- Improved Circulation: Enhances blood flow, aiding muscle recovery and vitality.
- Convenience: Portable for daily use, anytime and anywhere.
- Pain Relief: Alleviates muscle tension and soreness post-workout.
- Stress Relief: Promotes relaxation and well-being.

Applications:

Athletes, individuals with swelling or fluid retention, fitness enthusiasts, and anyone seeking relaxation.
The RollStar Mini is an effective tool for lymphatic health and muscle recovery, offering convenience and portability.

ROLLSTAR MINI S
LYMPHATIC MASSAGE
ROLLER



Functions

Grand

Lymphatic drainage
wood roller



Change rotation



Change speed



Infrared heating



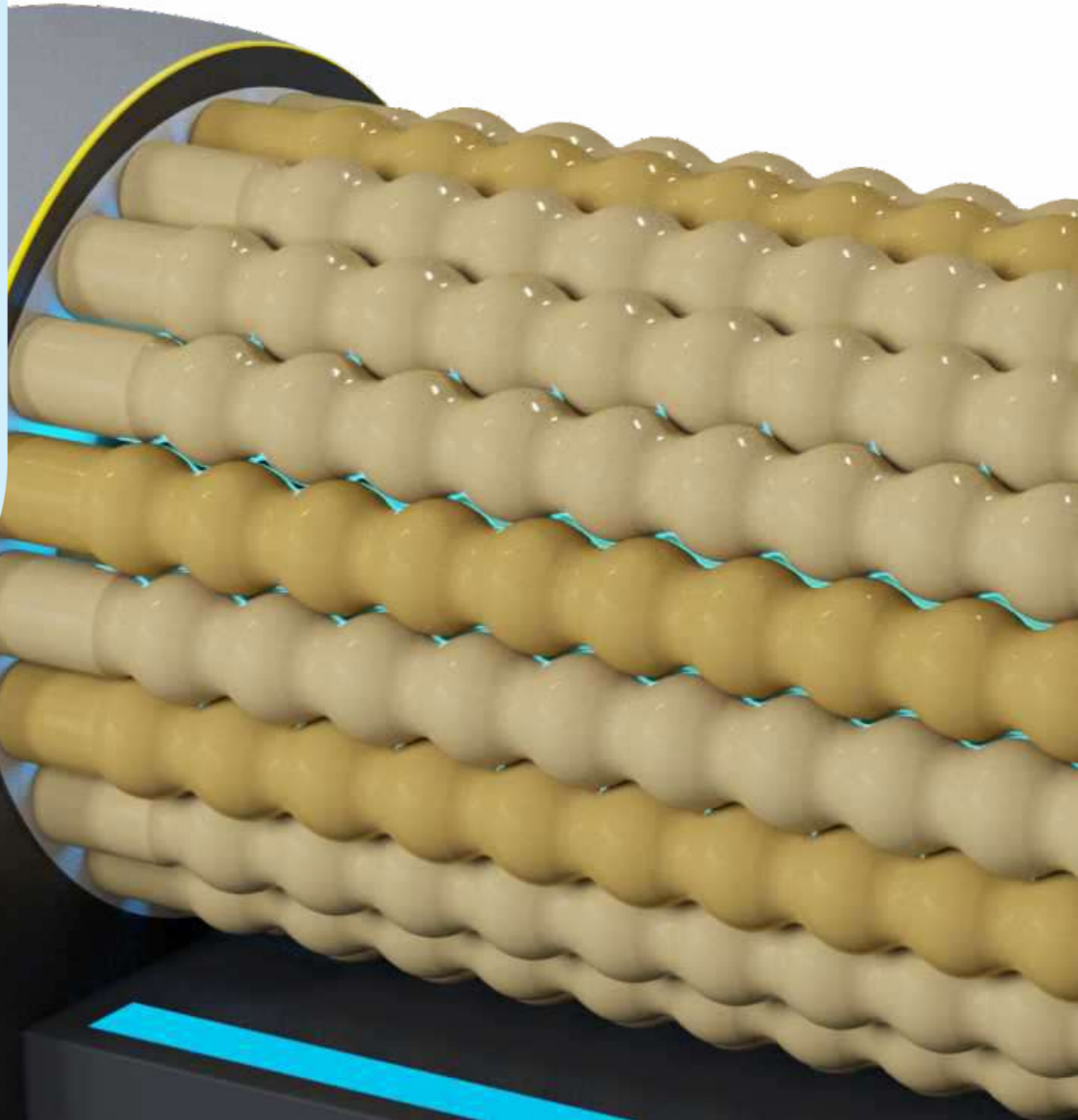
Smart Control scroller



Collagen lamp



PROFESSIONAL





Wellness SPA devices

www.vacuactivus.com



A New Standard in Human Restoration and Deep RegenerationThe Revique HaloX™ Longevity Capsule is an advanced, fully integrated wellness chamber designed for premium longevity centers, biohacking studios, medical spas, luxury hotels, and private wellness suites. It combines respiratory optimization, multisensory relaxation, photobiomodulation, and AI-guided personalization in a single high-end experience.

Core Technologies

Dry & Wet Salt Therapy

A dual salt system delivers micronized dry salt for lung cleansing and immune support, plus wet salt mist for skin hydration and detoxification. This creates an optimized respiratory environment that enhances oxygen absorption and overall vitality.Full-Body Red Light TherapyA 360° red and near-infrared light matrix increases cellular energy (ATP), supports collagen regeneration, reduces inflammation, and accelerates tissue repair—ideal for anti-aging and recovery.

Herbal Oxygen

BreathingAn inhalation module provides oxygen-enriched airflow infused with therapeutic herbal blends to improve lung function, cognitive clarity, and stress reduction. AI synchronizes breathwork patterns based on the user's state.

Zero-Gravity

Massage CouchA natural-wood, zero-gravity couch with micro-lifting zones, soft vibro-massage, and thermal heating promotes deep muscular relaxation and spinal decompression.

Infrared Heating & Cryo Effects

Alternating infrared warmth and cooling micro-breeze stimulate circulation, reduce inflammation, and activate metabolic and thermogenic pathways.

AI Ultrasound Brain Relaxation

Ultrasonic neural modulation reduces mental fatigue, calms the nervous system, improves mood, and supports restorative sleep.

AI Virtual Health Coach

The integrated AI adjusts salt levels, light intensity, massage, temperature, breathing rhythms, and visual projections in real time, offering a fully personalized wellness journey.

Immersive 3D Projection Environment

A panoramic 360° visual system with natural landscapes, cosmic scenes, and meditative environments creates a deeply restorative sensory atmosphere.

Programs

HaloX™ includes automated programs such as Deep Revive, Metabolic Boost, Cellular Rejuvenation, Stress Reset, Lung Regeneration, Detox Recovery, Sleep Optimization, and Anti-Inflammation Balance. Manual professional mode allows full customization for expert operators.

REVIQUE HALO X
LONGEVITY CAPSULE



Functions

Grand

Dry & Wet Salt Therapy (Halotherapy + Thalasso)
Full-Body Red Light Therapy



Herbal Oxygen Breathing Therapy



Zero-Gravity Natural Wood Massage Couch



Infrared Heating & Cryo Effects



AI UltraSound Brain Relaxation



AI-Driven Virtual Health Coach
(Live Voice Interaction)



3D Virtual Reality Projection & Star Sky Ceiling



PROFESSIONAL





InfraCouch Red Light with a top LED panel is a therapeutic device designed for red light therapy (RLT) to enhance healing and wellness. Here's a summary of its features and benefits:

Key Features:

- Red Light Therapy: Uses red light (600-900 nm) to stimulate cellular processes, promote healing, and improve circulation.
- Top LED Panel: Delivers targeted light therapy in a comfortable reclining position, adjustable for specific or full-body treatment.
- Comfortable Design: Provides a relaxing experience for long therapy sessions.
- User-Friendly Controls: Allows users to adjust light intensity, duration, and wavelength.
- Safety Features: Includes timers and automatic shut-off for safe usage.

Benefits:

- Enhanced Healing and Recovery: Reduces inflammation and aids in muscle recovery, making it ideal for athletes and injury recovery.
- Improved Skin Health: Helps with acne, wrinkles, and psoriasis by stimulating collagen production.
- Pain Relief: Relieves chronic pain, arthritis, and muscle soreness.
- Increased Energy: Stimulates ATP production, boosting energy levels.
- Relaxation: Promotes stress relief and mental well-being during sessions.

Applications:

Athletes, individuals with chronic pain or skin issues, and anyone seeking wellness benefits. Suitable for wellness centers, spas, and clinics offering advanced treatments. The InfraCouch Red Light offers an effective, comfortable way to experience red light therapy for overall health and recovery.

RED LIGHT
COUCH



Functions

Simple

Grand

3 chips 660nm and 850nm



Body red lights therapy



Red lights face therapy



Soft massage program



Colour lights therapy



Bluetooth speaker



Red lights top panel
(15.6" display, height adjustment)



Real EMS (biceps, shoulders, belly areas)



PROFESSIONAL





How Silhouette Shaper EMS Works and Its Benefits

The EMS device uses advanced DEPS technology (Dynamic Electromagnetic Pulse Stimulation) to induce up to 20,000 muscle contractions in just 30 minutes. This intensity surpasses traditional workouts, enabling rapid, natural muscle growth without pathological hypertrophy.

EMS not only builds muscle but also boosts metabolism in surrounding fat tissue, leading to fat reduction. The dual action of muscle toning and fat loss makes it an effective body-sculpting solution.

Benefits of EMS treatments:

- Builds muscle mass faster than traditional exercise.
- Reduces fat tissue effectively.
- Enhances body contour and definition.
- Short treatment sessions (30 minutes).
- Non-invasive and pain-free.
- Results visible within 4 weeks with regular sessions.

Silhouette Shaper EMS offers a quick, efficient way to achieve fitness and aesthetic goals.

**SILHOUETTE
SHAPER
EMS**



Functions

Technology HIFEM + RF + EMS

Magnetic vibration intensity 1-13 Tesla

RF Frequency 200 MHZ

HIFEM Frequency 1-135HZ

Pulse duration 350ps

Cooling system Air cooling





The Silhouette Shaper is an advanced aesthetic device designed for body contouring, cellulite reduction, and skin tightening using vacuum therapy and rolling massage. It offers a non-invasive approach similar to LPG Endermologie for improving body shape and skin texture.

Key Features:

- Vacuum Rolling Technology: Combines suction and rolling massage to improve circulation, lymphatic drainage, and metabolism.
- Customizable Settings: Adjustable intensity, suction, and treatment duration for personalized sessions.
- Ergonomic Design: Easy to maneuver over areas like the abdomen, thighs, buttocks, and arms.
- Non-Invasive: No downtime or discomfort, offering a non-surgical alternative.
- Multiple Modes: Targets cellulite, skin laxity, and body contouring.

Benefits:

- Cellulite Reduction: Breaks down fat deposits and enhances skin texture.
- Body Contouring: Helps reshape and tone targeted areas.
- Improved Lymphatic Drainage: Reduces fluid retention and promotes detoxification.
- Enhanced Circulation: Increases blood flow for healthier skin.
- Skin Tightening: Stimulates collagen production for firmer skin.
- Relaxation & Pain Relief: Relieves muscle tension and promotes relaxation.

Applications:

Suitable for individuals seeking non-invasive solutions for body contouring, skin rejuvenation, and muscle recovery, as well as wellness centers and spas.

The Silhouette Shaper offers a versatile, non-invasive approach to improving body shape and skin health.

**SILHOUETTE
SHAPER**



Functions

VacuRollEndo body shaping technology

Large handle for body parts

Small handle for face lifting parts

Adjuster of sucking power

15.6" color touch screen

PROFESSIONAL





The De-Stress Lounge is a modern, stylish relaxation chair designed to provide a variety of soothing massage options for the entire body and feet. Its advanced features and sleek design make it the perfect solution for relieving stress and promoting relaxation.

- Zero gravity design Freely adjust the backrest angle
- Full body air pressure massage and intensity adjustable
- SL Track
- Shoulder position detection function
- Leg airbag squeezing and foot massager
- Bluetooth HIFI music surround sound
- Leg and back heating function
- The space capsule armrest design, the inclination angle is comfortable, and the arm is placed naturally
- Remote sensing function (Tiktok control button)
- Upgrade the capacitor screen-Advanced
- Auto mode
- Armrest quick button+USB charge
- Health monitoring (heart rate)
- Upgrade plastic legs
- Wireless charging function
- Phone/IPAD holder
- Thai stretch
- AI voice function

DE-STRESS
LOUNGE



Functions

De-stress tension relief

Automatic massage programs 12

Zero gravity relax

Heating

Touch screen menu 7"

Cell phone charger

Foot position adjustment

Body scanning

Bluetooth speakers





MedSaniStar Disinfection Access Station is a hygiene solution designed to enhance safety in healthcare, public spaces, and businesses by offering automated disinfection and temperature checks.

Key Features:

- Automated Disinfection: Touchless hand sanitizers and UV light sterilization for hands-free hygiene.
- Temperature Check: Integrated infrared thermometer for quick and accurate body temperature readings.
- Multi-Functional Design: Combines hand sanitization, surface disinfection, PPE storage, and temperature monitoring.
- User-Friendly Interface: Easy to operate with minimal training required.
- Durable Materials: Built to withstand high-traffic environments.
- Portable and Versatile: Suitable for hospitals, schools, offices, and public spaces.

Benefits:

- Enhanced Infection Control: Reduces transmission risk through accessible sanitation and temperature checks.
- Improved Public Confidence: Instills trust in hygiene practices.
- Convenience & Accessibility: Ensures easy access to disinfection and temperature monitoring.
- Encourages Good Hygiene Practices: Promotes regular sanitization and health monitoring.
- Customizable: Adaptable to specific hygiene needs.

Applications:

Healthcare facilities, schools, transportation hubs, retail businesses, and offices. The MedSaniStar helps maintain cleanliness, boost public confidence, and improve infection control in various environments.

**SILHOUETTE
SHAPER**



Functions

Simple

Grand

Hand dispenser

○

○

10L tank

○

○

Sensor of liquid level

○

○

Temperature sensor

○

○

Plastic exterior

○

Glass exterior

○

Face recognition

○

○

Mask recognition

○

○

Auto report on external server

○

PROFESSIONAL

